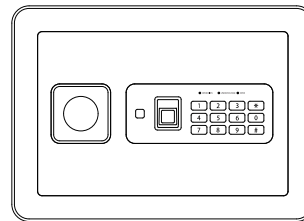




# USER MANUAL

Fingerprint & password series



T590/T591

## DELI GROUP CO., LTD.

301 Xuxiake Ave. Ninghai County  
Ningbo 315600 China Made in China  
info@nbdeli.com www.deliworld.com



KEEP FOR  
FUTURE USE

Version: 1.0  
Date: 09-2023

## Contents

1. Product unpacking	1
2. Product diagram	1
3. Product description	2
4. Door opening methods	2
5. Change password	3
6. Register fingerprint	3
7. Jamming code function	4
8. Restore factory settings	4
9. Operation error alarm function	4
10. Undervoltage alarm function	4
11. How to enable single-opening or double-opening mode	4
12. Precautions for use	5
13. Common faults and troubleshooting methods	6

Welcome to our series products of safes (cabinets) and lock boxes. Please read the instruction manual carefully before use, and operate correctly according to the instructions.

## 1. Product unpacking

After opening the packaging box, confirm whether the product appearance is intact and check off all accessories. In case of any loss or damage, please contact the dealer!



Manualx1



Emergency keyx2



Expansion boltx2



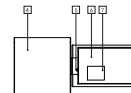
AA batteryx4

## 2. Product diagram

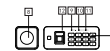
Front



Side (with door open)



Panel diagram



Serial number	1	2	3	4	5	6	7
Name	Safe door	Emergency keyhole	Electronic panel	Box body	Settings key	Rear cover	Internal battery case
Serial number	8	9	10	11	12	13	
Name	Knob	Yellow light	Red light	Green light	Fingerprint area	Digital keys	

### 3. Product description

1. Yellow light represents digital input indicator/red light represents undervoltage indicator/green light represents door opening indicator;
2. Four door opening methods: Key + Knob/ Password +knob / Fingerprint +knob / Password + fingerprint+ knob ;
3. The factory password is 1234;
4. The factory fingerprint is empty (note: when the fingerprint is empty, the door can be opened with any fingerprint);
5. This system has password/fingerprint memory function;
6. It is strongly recommended to change the factory customer password and set the fingerprint before first use;
7. This product can register a total of 30 fingerprints;
8. There is a long "beep" sound when powered on, with the yellow, red, and green lights blinking simultaneously;
9. When using and registering fingerprints, it is best to lightly press your finger on the fingerprint area to make the finger surface in full contact with the fingerprint area.

### 4. Door opening methods

- Method 1: Insert the key directly into the keyhole on the panel and turn it counterclockwise, then turn the knob clockwise to open the door;
- Method 2: Enter a 3-8 digit password, press the # key, and you will hear "beep" sound twice and the green light is on, then turn the knob to open the door;
- Method 3: Enter the correct fingerprint, when you hear "beep" sound twice and the green light is on, turn the knob to open the door;
- Method 4: With the dual mode function enabled, enter the correct password+correct fingerprint, when you hear "beep" sound twice and the green light is on, turn the knob to open the door.

- 2 -

Note: Method 2,3, 4 requires turning the handle clockwise to open the door within 6 seconds after entering the password and fingerprint.

### 5. Change password

After entering the correct password, press the "#" key to confirm, the buzzer will sound "beep" twice. Press the "#" key again within 6 seconds, then the yellow light will light up. Enter a new 3-8 digit password and press "#" to confirm, the buzzer will sound "beep" twice, indicating that the new password has been successfully modified.

The initial password of this product is "1234". Please reset your personal password before use to ensure safety.

### 6. Register fingerprint

Enter the correct password or fingerprint to open the door and press the reset button (on the back of the safe door) within 30 seconds, then the buzzer will sound "beep" twice and the fingerprint area will light up blue. Then press a new finger on the fingerprint area, and release it after the green light is on. A total of five inputs are required (it is recommended to input the same finger from different directions to ensure that the fingerprint collector can collect the largest area of fingerprints). When the buzzer sounds a long "beep", release your finger. Now the fingerprint registration is successful.

Note:

1. If the fingerprint verification fails, and the buzzer sounds "beep" three times, it indicates that the fingerprint registration has failed;
2. Every time when you register a fingerprint, regardless of success or failure, the registration time is 30 seconds from the completion of one action in the current operation. If the time limit is exceeded, the system will automatically return to standby mode.

- 3 -

### 7. Jamming code function

When entering a password, you can enter any number of digits in the front, as long as the last 3-8 digits match the correct password, it can pass the verification. (This function is available in both single-opening mode and dual-opening mode).

### 8. Restore factory settings

Press the reset button for 3 seconds, and the system will return to the factory settings when the buzzer sounds a long "beep".

### 9. Operation error alarm function

When you enter an incorrect password for three times successively, or enter a wrong fingerprint for five consecutive times, the system will be locked and the buzzer will sound for 1 minute. (During the system lock-up period, any operation is invalid. It will automatically unlock after 1 minute.)

### 10. Undervoltage alarm function

When the voltage reaches 4.6V (+/-0.2V), after the door opens, it will flash and the buzzer will sound five times, indicating that the battery needs to be replaced timely.

### 11. How to enable single-opening or dual-opening mode

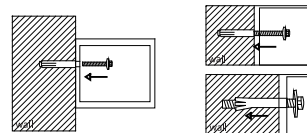
1. How to enter the single-opening mode: Press and hold key "1", then press the reset button. When you hear a long "beep" sound, it indicates that the system has entered the single-opening mode.

- 4 -

2. How to enter the dual-opening mode: Press and hold key "2", then press the reset button. When you hear a long "beep" sound, it indicates that the system has entered the dual-opening mode.

### 12. Precautions for use

1. Do not place the User's Manual, emergency keys, and external battery box in the box, store them in another safe place instead.
2. If the product is not used for a long time, remove the battery to prevent leakage from damaging the electronic system.
3. For the sake of safety, be sure to fix the cabinet on a solid concrete wall.
4. Do not store excessive cash and valuables when no one is on duty or there is no remote alarm device.



Installation layout

- 5 -

### 13. Common faults and troubleshooting

Fault symptoms	Cause of failure	Troubleshooting
No any response when pressing the digit keys to enter the password	The battery is dead	Open the door with emergency key and replace the battery
	Battery polarity reversed	Install the battery in the correct way
	PCB failure	Please contact the maintenance department
The emergency key cannot be inserted in or removed	Foreign object in the keyhole	Remove foreign objects from the keyhole
	The key is not turned to the limit position	Please reinsert in the correct way
The safe door cannot be opened when the electronic combination has been unlocked	The handle has been turned for more than 7 seconds and the electronic lock has been reset	Reenter the password and rotate handle to the limit within 6 seconds
The alarm does not sound	The battery is dead	Replace the battery
	The battery polarity reversed	Install the battery in the correct way

### WARRANTY CARD

Dear user,  
Thank you for purchasing our products. To ensure the interests of our users, if the products fail due to quality issues, you can contact your local dealer or authorized maintenance station with the invoice and warranty card.

**Warranty notice:**

1. Within one year from the date of purchase, if there is a fault during normal use, our company will provide free maintenance, component replacement, and other services based on the fault condition;

2. This warranty card and purchase invoice are vouchers for the company to provide after-sales service to customers. The following forms in this card must be completed in detail, and shall be valid upon being stamped by the dealer;

3. Under any of the following circumstances, free warranty service is not applicable and repairs will be charged:

- (1) Beyond the validity period of the warranty;
- (2) Damage caused by improper use, maintenance or storage not in accordance with the requirements in the product User's Manual;
- (3) Product malfunction or damage caused by force majeure;
- (4) Wearing parts or standard accessories.

This card is issued together with the product, one card for each product. In order to ensure that you can fully enjoy the free warranty service provided by our company, keep this card properly, and it will not be replaced if lost.

Purchase date: \_\_\_\_\_ (mm/dd/yyyy)

### WARRANTY CARD

Product Information	Product Name		Serial Number	
	Product Model		Manufacturing Date	
Customer Information	Company Name		Contact	
	Address		Phone	
Sales Information	Dealer Name		Contact	
	Address		Phone	
	Date of Purchase		Invoice No	
Maintenance Record	Description of Malfunction	Maintenance Results	Customer Signature	Maintenance Technician Signature

Welcome to use our safe (cabinet) and safe deposit box products. Please read the User's Manual carefully before use and operate them correctly.

### WARRANTY CARD

Product Information	Product Name		Serial Number	
	Product Model		Manufacturing Date	
Customer Information	Company Name		Contact	
	Address		Phone	
Sales Information	Dealer Name		Contact	
	Address		Phone	
	Date of Purchase		Invoice No	
Maintenance Record	Description of Malfunction	Maintenance Results	Customer Signature	Maintenance Technician Signature