

- WARNING:** Running this device in a residential environment may cause radio interference.
- WARNING:** Has sharp edges, do not touch.
- WARNING:** Hot parts: Touching the parts will burn your fingers, wait half an hour after turning off the power before touching the parts.

DELI

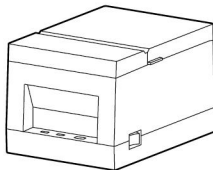
# USER MANUAL

## RECEIPT PRINTER

**CERTIFICATE**

Inspector: \_\_\_\_\_

Date of Manufacture: \_\_\_\_\_



801P-N

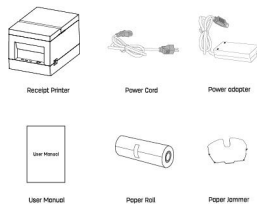
**DELI GROUP CO., LTD.**  
300 Xuelake Ave. Ninghai County  
Ningbo, 315600 China Made in China  
info@deli.com www.deliworld.com



**KEEP FOR FUTURE USE.**  
Version: 1.0  
Date: 03/2023

### 1. Packing List

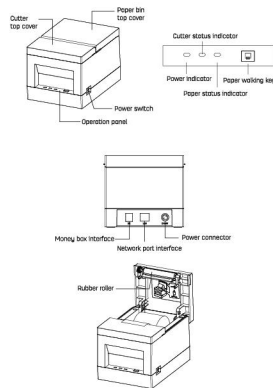
Please check if the product is intact after unpacking and verify that all the accessories have been received. If any items are missing, please contact your dealer.



Warm tip: Please use the supplied CD or go to deli official website <http://www.deliworld.com> to download the driver.  
Note: The symbol means that this product is safe for use in non-toxic climates only.

- 1 -

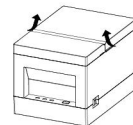
### 2. Appearance and Components



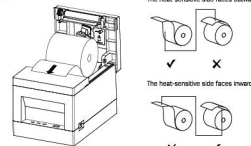
- 2 -

### 3. Loading the paper roll

1. Face the front of the printer, press the top cover button in the direction of the arrow and lift the top cover up. (The arrow diagram is shown below).  
2. If there is a paper roll in the paper compartment, please take it out.



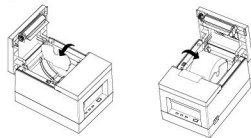
3. Load a paper roll to the paper holder making sure the roll is placed in the right direction.



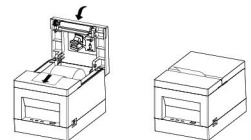
- 3 -

### 3. Loading the paper roll

1. When printing a 58mm paper roll, place the jammer into the paper bin recess first, then place the paper roll into the paper bin in the direction described in step 3.



5. Pull a section of paper out of the printer and close the cover.

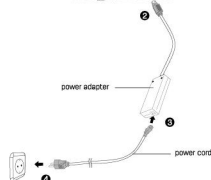


Warm tip: After power on, open and close the paper bin cover, the cutter will automatically remove excess paper.

- 4 -

### 4. Power Connection

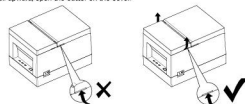
1. Make sure the power switch is at the OFF position.  
2. Connect the power adapter to the printer.  
3. Connect the power cable to the power adapter.  
4. Connect the other end of the power cord to a nearby outlet.



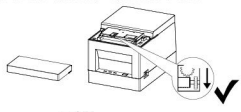
- 5 -

### 5. Paper Jam Handling

In the event of a paper jam or knife jam, remember not to open the top cover of the paper bin to avoid damage to the cutting knife.  
2. With hands while clamping the arrow on both sides of the convex bar, push and pull upward, open the cutter on the cover.



3. Please toggle the gear in the direction of the yellow arrow on the cutter film until the blade returns to the correct position, as shown in Figure (2).  
Note: Before returning the cutting knife, please cut off the power.



When the knife is stuck, the cutter in diagram (1) can be seen.  
The cutter is completely retracted, the cutter diagram (2) cannot be seen.

- 6 -

### WARRANTY CARD

Thank you for your purchase of our products. The interests of customers who purchase our products will be protected. For any malfunction due to product quality problems, please contact authorized local dealers or service centers with this receipt and the warranty card.

**Warranty terms:**  
1. For product failures occur under normal operating circumstances, free of charge repair and spare parts should be provided by our company within one year commencing from date of purchase.  
2. Customers are required to present this warranty card and the original purchase invoice to our company upon request for warranty service. This warranty card shall be valid only after the following form is filled out in details and affixed with official seal of the dealer.  
3. No free of charge repair service shall be provided in the event of any of the following circumstances:  
(1) Expiration of the warranty period;  
(2) Damages caused by improper use, maintenance or storage not in accordance with the requirements of the user manual;  
(3) Failure or damage resulting from unauthorized disassemble, repair or modification;  
(4) Failure or damage caused by force majeure;  
(5) Wear parts or accessories.

This warranty card is being delivered with the product, one card for one product. Please keep this warranty card in proper condition for free warranty service. There is no replacement if lost.

Date of Purchase: \_\_\_\_\_ Y \_\_\_\_\_ M \_\_\_\_\_ D

Product Information	Product Name	Product Model Number	Serial Number	Manufacturer's Date
Customer Information	Company Name	Address	Contact	Phone
Sales Information	Dealer Name	Address	Contact	Phone No.
	Date of Purchase	Invoice No.		
Maintenance Record	Description of Malfunction	Maintenance Results	Customer Signature	Maintenance Technician Signature
				Maintenance Date

This copy shall be out along the dotted line and kept by the dealer.

Product Information	Product Name	Product Model Number	Serial Number	Manufacturer's Date
Customer Information	Company Name	Address	Contact	Phone
Sales Information	Dealer Name	Address	Contact	Phone No.
	Date of Purchase	Invoice No.		
Maintenance Record	Description of Malfunction	Maintenance Results	Customer Signature	Maintenance Technician Signature
				Maintenance Date

- 7 -